

LOCATOR



Graphical User Interface for Fire Detection Equipment

Product Overview

SHIELD fire control panels can send data to, and be controlled by, the LOCATOR system providing a single point of co-ordination for all alarms.

The powerful 32 bit programme features a standard Windows look and feel and runs under Windows® 2000 , XP, Vista or Windows 7 Professional. The system is highly configurable in terms of the style of presentation so that the end user can be presented with maps, text, photographs, audio or a combination of all as required.

User profiles allow the system manager to control the facilities available to each individual system user. A comprehensive history logging and reporting system allows analysis of events and trends to be identified to reduce unwanted alarms.

Easy to programme and simple to use, locator provides a cost effective solution for fire alarm management at many levels.

Standard Features

- Choice of text, graphic, event list display when an event occurs.
- Versatile event analysis.
- Total history archive.
- Easy to programme.
- Secure system.
- Cost effective compared to other systems.
- Simple to use.
- Unlimited map linking & zoom facility.
- Support for 100's of graphics.
- Display and control for multiple panels.
- Event history explore and export facility to text or HTML documents.

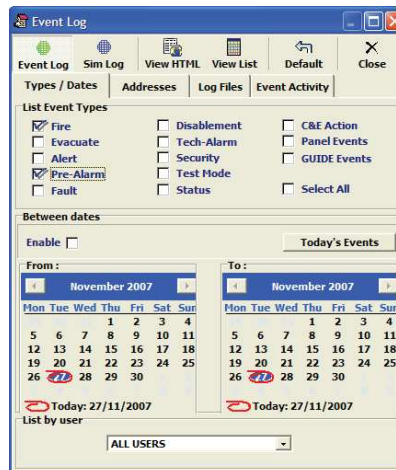


Fig 1. Powerful Event Log Filtering



Fig 2. Virtual Panel

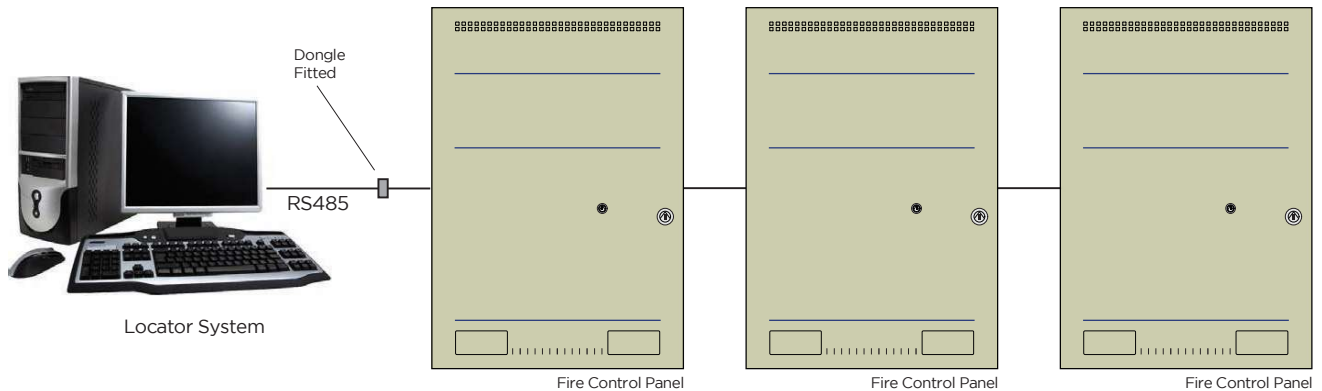
Note: Specifications are subject to change without notice

Technical Specifications (Work Station)	
Processor	Intel Pentium 1 Ghz
Operating System	Windows® XP/Vista , 7 Professional
Memory	1 Gb Minimum
Hard Disk	10 Gb Minimum
Graphics	1024 x 768 16 M Colours
Sound Card	Any PC Sound Card
Loudspeaker	Any PC Speakers
Monitor	Any That Supports Above Graphics Driver
Pointing Device	Mouse Essential
Printer	Optional
Parallel Port	Optional
Serial Ports	One RS232 Per Network
CDROM Drive	Any
Backup Drive	CD Writer

Note: Locator will be operating 24 hours a day for many years. It may be desirable to include on site PC maintenance as part of the package. The SHIELD Omega panel to which the Locator system is connected must not have a printer fitted.

Ordering Information	
S1001	Locator Software - Single Panel Package
S1004	Locator Software - 4 Panel Package
S1008	Locator Software - 8 Panel Package
S1016	Locator Software - 16 Panel Package
S1032	Locator Software - 32 Panel Package
S1064	Locator Software - 64 Panel Package

Note: Locator for use with SHIELD Panels. SHIELD Omega 6 & 8 loop panels are considered 2 panels in the packages above.



Note: Specifications are subject to change without notice