



GVI

GLOBAL VISION INC

GVI FIRE PUMP TEST METERS

THE INDUSTRY LEADER IN FLOW METERS



GLOBAL VISION INC 8730 JEFFERSON HIGHWAY
OSSEO, MINNESOTA 55369 USA TEL: 763-391-0990 FAX: 763-391-7668
WWW.GVIFLOW.COM INFO@GVIFLOW.COM



WHY CHOOSE GVI?



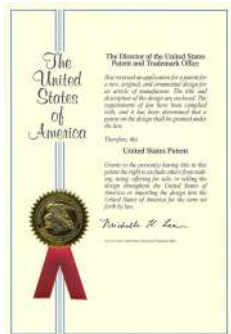
- FM / UL LISTED FLOW METERS
- PATENTED ACCURACY OF 0.5%
- FRICTION LOSS LESS THAN 1 PSI
- 612 WARRANTY: 6YR GAUGE / 12YR VENTURI
- DIGITAL GAUGE WITH 4-20MA TRANSMITTER
- SUBSTANTIAL INVENTORY FOR QUICK SHIPPING

WITH CONTINUOUS IMPROVEMENTS AND CUTTING EDGE TECHNOLOGY, GVI HAS JUST RELEASED OUR MOST ACCURATE FLOW METER EVER.

THIS IS WHY GVI IS THE MOST REQUESTED AND MOST SPECIFIED FIRE METER IN THE WORLD.

THE GVI GAUGE IS USED IN MORE FIRE TRAINING CENTERS WORLDWIDE THAN ALL FLOW TEST METER COMPETITORS COMBINED.

AFTER USING GVI FLOW METER FOR THE FIRST TIME, YOU WILL UNDERSTAND WHY WE ARE NUMBER 1.



ACCUFLOW VENTURI
PATENT
#D764,630S



CUSTOMIZED AND SPECIAL PROJECTS



GVI HOLDS FM AND UL LISTING





DIGITAL 4-20MA TRANSMITTER



THE FIRE PUMP FLOW TEST HAS NEVER BEEN EASIER. THE NEW FM/UL APPROVED DIGITAL GAUGE FROM GVI ALLOWS USERS TO EASILY READ THE DISPLAY.

- ◆ TEMP: 32F - 140F
- ◆ POWER: 12-32 VDC
- ◆ 2 WIRE 4-20 MA
- ◆ BACKLIT DISPLAY
- ◆ REVERSE POLARITY PROTECTION
- ◆ OPTIONAL BATTERY PACK AVAILABLE



TRANSMITTING TO A COMPATIBLE CONTROLLER WILL ALSO ALLOW OPTIONS FOR CAPTURING FLOW CURVE AND ADDITIONAL DATA.



CALIBRATION:

THE UNIT IS FACTORY CALIBRATED AND HAS NO USER ADJUSTMENTS FOR CALIBRATION. THE ASSEMBLY USES A MICROPROCESSOR TO PERFORM AN 11 POINT SQUARE ROOT LINEARIZATION ALGORITHM.

DISPLAY UNITS IN: GPM / LPM / M3H

PRODUCTION / TESTING

GVI PRODUCES ALL VENTURIS FROM DOMESTIC U.S. THICK WALL TUBE. THIS HEAVY DUTY STEEL ENSURES OUR VENTURI WILL BE AROUND YEARS LONGER THAN THE THINNER, LIGHTWEIGHT ALTERNATIVES, SO MUCH LONGER, GVI HAS A **12 YEAR WARRANTY** ON THIS VENTURI.



WITH 2 NEW CNC LATHES AT GVI, LEAD TIMES ARE IN HOURS, NOT WEEKS



TOLERANCES OF .005 MEAN A PERFECT VENTURI EVERY TIME



AFTER MACHINING, EVERY VENTURI IS INSPECTED WITH ISO CERTIFIED TEST EQUIPMENT



NIST METER TESTING

EVERY GVI GAUGE UNDERGOES ADVANCED COMPUTERIZED TESTING BEFORE LEAVING THE FACTORY. THESE TESTS INCLUDE LEAKAGE, CALIBRATION, AND ACCURACY TESTS.

UPON SUCCESSFUL TESTING THE GAUGE IS ISSUED AN NIST CERTIFICATE TIED SPECIFICALLY TO THE SERIAL NUMBER ON THE DIAL FACE.

THE CERTIFICATION IS STORED IN A PLASTIC POUCH CONNECTED TO THE GAUGE. THIS POUCH ALSO ILLUSTRATES THE TYPICAL INSTALLATION AND THE OPERATING INSTRUCTIONS FOR THE FIRE PUMP FLOW TEST.

CONTACT YOUR GVI REP FOR DUPLICATE SHEETS OR UPDATED CERTIFICATIONS.



Line Size	Pump GPM	Meter Range Min. & Max. GPM	Meter Range Min. & Max. LPM	Model Number Grooved	Model Number Butt Weld	Model Number 150# Flanged	Model Number <Threaded> *300# FLANGED*
**1-1/4"	25	12.5 – 50	47 - 189	* 1.25"-25-G	1.25"-25-B	* 1.25"-25-F	1.25"-25-T
**2"	50	25 – 100	95 - 379	* 2"-50-G	2"-50-B	* 2"-50-F	2"-50-T
**2-1/2"	100	50 - 200	189 - 757	2.5"-100-G	2.5"-100-B	2.5"-100-F	*2.5"-100-F3
3"	150	75 – 300	284 - 1136	3"-150-G	3"-150-B	3"-150-F	*3"-150-F3
3"	200	100 – 400	379 - 1514	3"-200-G	3"-200-B	3"-200-F	*3"-150-F3
4"	250	125 – 500	473 - 1893	4"-250-G	4"-250-B	4"-250-F	*4"-250-F3
4"	300	150 – 600	568 - 2271	4"-300-G	4"-300-B	4"-300-F	*4"-300-F3
4"	400	200 – 800	757 - 3028	4"-400-G	4"-400-B	4"-400-F	*4"-400-F3
4"	450	225 – 900	852 - 3407	4"-450-G	4"-450-B	4"-450-F	*4"-450-F3
5"	450	225 – 900	852 - 3407	5"-450-G	5"-450-B	5"-450-F	*5"-450-F3
5"	500	250 – 1000	946 - 3785	5"-500-G	5"-500-B	5"-500-F	*5"-500-F3
5"	750	375 – 1500	1420 - 5678	5"-750-G	5"-750-B	5"-750-F	*5"-750-F3
6"	500	250 – 1000	946 - 3785	6"-500-G	6"-500-B	6"-500-F	6"-500-F3
6"	750	375 – 1500	1420 - 5678	6"-750-G	6"-750-B	6"-750-F	6"-750-F3
6"	1000	500 – 2000	1893 - 7570	6"-1000-G	6"-1000-B	6"-1000-F	6"-1000-F3
6"	1250	625- 2500	2366 - 9462	6"-1250-G	6"-1250-B	6"-1250-F	6"-1250-F3

STANDARD MODEL LIST



Line Size	Pump GPM	Meter Range Min. & Max. GPM	Meter Range Min. & Max. LPM	Model Number Grooved	Model Number Butt Weld	Model Number Flanged
8"	1000	500 – 2000	1893 - 7570	8"-1000-G	8"-1000-B	8"-1000-F
8"	1250	625 – 2500	2366 - 9462	8"-1250-G	8"-1250-B	8"-1250-F
8"	1500	750 – 3000	2839 - 11356	8"-1500-G	8"-1500-B	8"-1500-F
8"	2000	1000 – 4000	3785 - 15142	8"-2000-G	8"-2000-B	8"-2000-F
8"	2500	1250 – 5000	4731 - 18925	8"-2500-G	8"-2500-B	8"-2500-F
8"	3000	1500 – 6000	5678 - 22712	8"-3000-G	8"-3000-B	8"-3000-F
10"	1500	750 – 3000	2839 - 11356	10"-1500-G	10"-1500-B	10"-1500-F
10"	2000	1000 – 4000	3785 - 15142	10"-2000-G	10"-2000-B	10"-2000-F
10"	2500	1250 – 5000	4731 - 18925	10"-2500-G	10"-2500-B	10"-2500-F
10"	3000	1500 – 6000	5678 - 22712	10"-3000-G	10"-3000-B	10"-3000-F
10"	3500	1750 – 7000	6624 - 26495	10"-3500-G	10"-3500-B	10"-3500-F
10"	4000	2000 – 8000	7570 - 30283	10"-4000-G	10"-4000-B	10"-4000-F
10"	4500	2250 – 9000	8518 - 34068	10"-4500-G	10"-4500-B	10"-4500-F
12"	2500	1250 – 5000	4731 - 18925	* 12"-2500-G	* 12"-2500-B	* 12"-2500-F
12"	3000	1500 – 6000	5678 - 22712	* 12"-3000-G	* 12"-3000-B	* 12"-3000-F
12"	3500	1750 – 7000	6624 - 26495	* 12"-3500-G	* 12"-3500-B	* 12"-3500-F
12"	4000	2000 – 8000	7570 - 30283	* 12"-4000-G	* 12"-4000-B	* 12"-4000-F
12"	4500	2250 – 9000	8518 - 34068	* 12"-4500-G	* 12"-4500-B	* 12"-4500-F
12"	5000	2500 - 10000	9464 - 37854	12"-5000-G	12"-5000-B	12"-5000-F



**1026
Carbon Steel**

316 stainless

Duplex S.S.

Super Duplex

Monel

NiAlumBrz

90-10 Cu-Ni

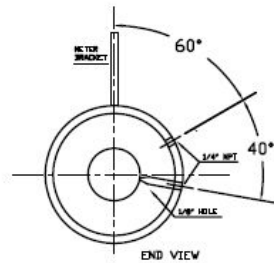
Aluminum

Brass

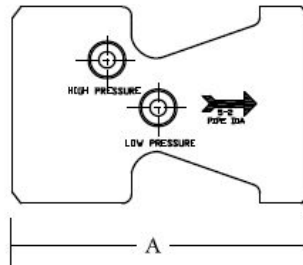
Epoxy

CONSTRUCTION & SPECIFICATIONS	
MATERIALS:	1026 MACHINED CARBON STEEL
VALVES:	1/4" BRASS BALL
FLANGE OPT:	150# ANSI B 16.5 300# ANSI B 16.5
ID TAG:	ALUMINUM

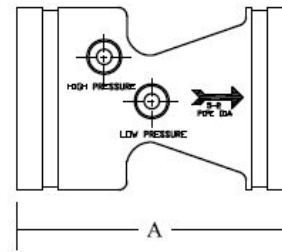
METER DATA	
	CONSTRUCTION: ALUMINUM BODY
	OPERATION: DIAPHRAGM (BUNA CONVOLUTED)
	TEMPERATURE: 180°F / 80°C
	PRESSURE: 500 PSIG - 3450 KPA
	APPROX. WEIGHT: 3.75 LBS (1.7 KGS)
4" DIAL STANDARD - 6" DIAL AVAILABLE	



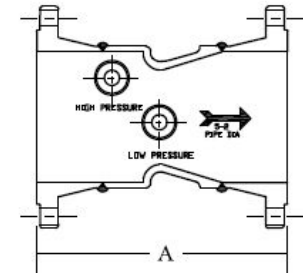
BUTT WELD / GROOVED



BUTT WELD



GROOVED



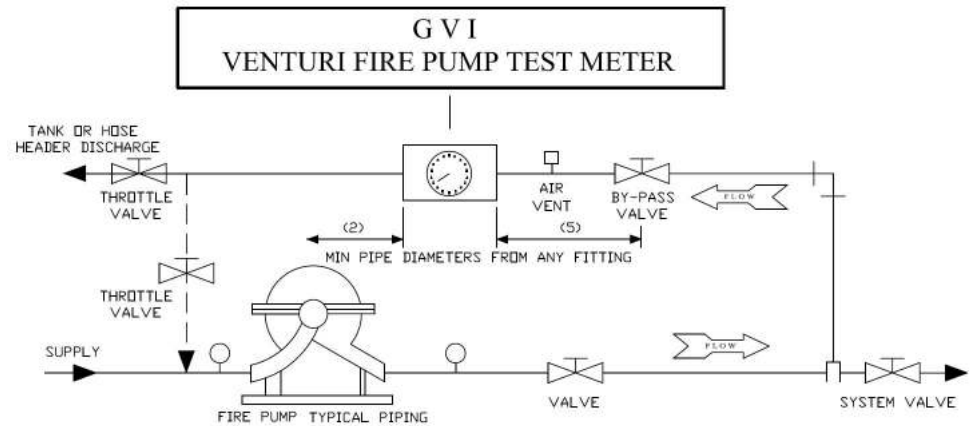
FLANGED

SIZE	BUTT WELD & GROOVED		150 # FLANGED		300# FLANGED	
	"A" DIM	APPROX. WEIGHT	"A" DIM	APPROX. WEIGHT	"A" DIM	APPROX. WEIGHT
1-1/4"	4.875	10 lbs.	—	—	—	—
2"	5.000	11 lbs.	—	25 lbs.	—	—
2-1/2"	4.000	11 lbs.	9.250	25 lbs.	10.000	35 lbs.
3"	4.000	13 lbs.	9.375	40 lbs.	10.250	50 lbs.
4"	5.375	15 lbs.	11.375	50 lbs.	12.125	65 lbs.
5"	6.000	20 lbs.	13.000	60 lbs.	13.750	80 lbs.
6"	7.000	25 lbs.	14.000	75 lbs.	14.750	115 lbs.
8"	7.250	35 lbs.	15.250	120 lbs.	16.000	175 lbs.
10"	8.000	60 lbs.	16.000	170 lbs.	17.250	225 lbs.
12"	10.000	65 lbs.	19.000	225 lbs.	20.250	345 lbs.

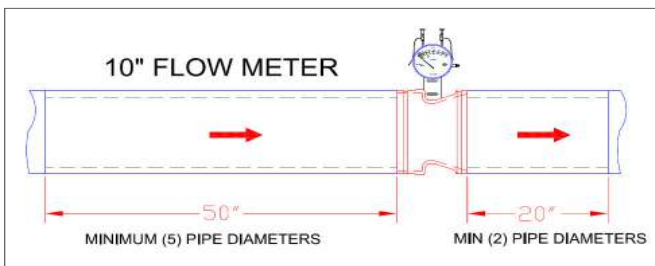
INSTALLATION / OPERATION



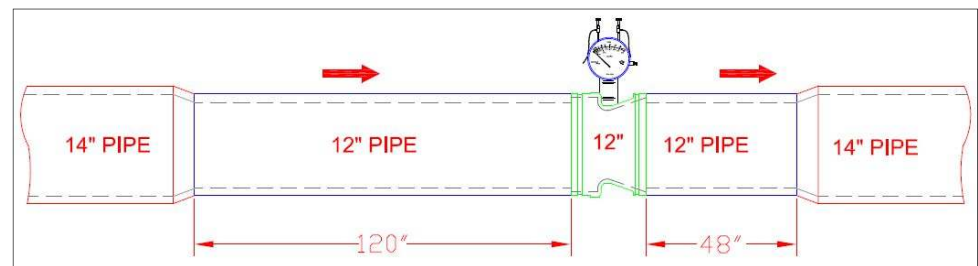
1. CLOSE THE SYSTEM VALVE
2. OPEN THE BY-PASS VALVE AND THROTTLE VALVE
3. PURGE AIR FROM METER AS FOLLOWS:
 - OPEN BALL VALVE ON RED AND GREEN HOSES
 - OPEN THE HIGH SIDE BLEEDER KNOB UNTIL A STEADY STREAM OF WATER IS COMING FROM THE CLEAR HOSE
 - CLOSE HIGH PRESSURE BLEEDER KNOB
 - REPEAT FOR LOW PRESSURE SIDE
 - ENSURE BOTH BLEEDER KNOBS ARE CLOSED
4. START FIRE PUMP, READ METER IN GPM/LPM/M3H
5. REFER TO PUMP REQUIREMENTS AND ADJUST THROTTLE VALVE FOR THIS REQUIREMENT
6. AFTER TEST, OPEN SYSTEM VALVE AND CLOSE THE BY-PASS AND THROTTLE VALVES



TYPICAL FLOW LOOP CONFIGURATION
CAN BE INSTALLED VERTICALLY OR HORIZONTALLY



TYP. INSTALL WITH 5/2 PIPE DIAMETERS.
CLEAR OF OBSTRUCTIONS, VALVES, OR BENDS.



IF REDUCERS ARE USED, LENGTHEN THE MIN PIPE DIA.
TO 10/4 TO ENSURE ACCURACY IS MAINTAINED.



REPLACEMENT HOSES



Replacement Hoses with Full Brass Fittings

GREEN HOSE

- 24-FPH-F-GRN 2' Green fire pump hose with brass fittings
- 36-FPH-F-GRN 3' Green fire pump hose with brass fittings
- 60-FPH-F-GRN 5' Green fire pump hose with brass fittings
- 120-FPH-F-GRN 10' Green fire pump hose with brass fittings
- 180-FPH-F-GRN 15' Green fire pump hose with brass fittings

RED HOSE

- 24-FPH-F-RED 2' Red fire pump hose with brass fittings
- 36-FPH-F-RED 3' Red fire pump hose with brass fittings
- 60-FPH-F-RED 5' Red fire pump hose with brass fittings
- 120-FPH-F-RED 10' Red fire pump hose with brass fittings
- 180-FPH-F-RED 15' Red fire pump hose with brass fittings



Replacement Hoses WITHOUT Brass Fittings

GREEN HOSE

- 24-FPH-GRN 2' Green fire pump hose only
- 36-FPH-GRN 3' Green fire pump hose only
- 60-FPH-GRN 5' Green fire pump hose only
- 120-FPH-GRN 10' Green fire pump hose only
- 180-FPH-GRN 15' Green fire pump hose only

RED HOSE

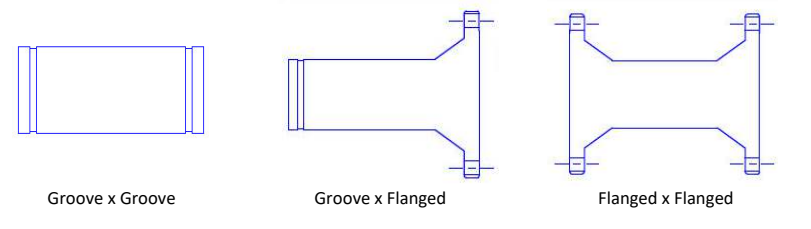
- 24-FPH-RED 2' Red fire pump hose only
- 36-FPH-RED 3' Red fire pump hose only
- 60-FPH-RED 5' Red fire pump hose only
- 120-FPH-RED 10' Red fire pump hose only
- 180-FPH-RED 15' Red fire pump hose only



Brass Fitting Assembly

- BFA1 - Single assembly
- BFA2 - Brass fitting pair

GVI Spooling Pieces



FLOW METER ACCESSORIES



CONTACT YOUR GVI REPRESENTATIVE FOR ADDITIONAL INFORMATION ON REPLACEMENT PARTS AND ACCESSORIES.



ANALOG GAUGE



DIGITAL GAUGE



DIGITAL BATTERY PACK



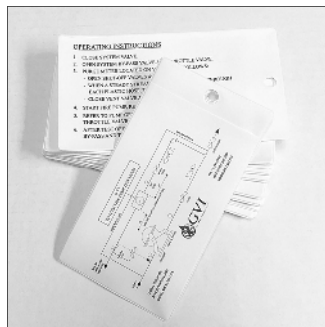
HARD STORAGE CASE



CLEAR BLEED HOSE



BLEEDER VALVES



INSTRUCTION POUCH



ENGRAVED I.D. TAG



AUTO AIR VENT



FACEBOOK



GVIFLOW.COM



GLOBAL VISION INC 8730 JEFFERSON HIGHWAY
OSSEO, MINNESOTA 55369 USA
TEL: 763-391-0990 FAX: 763-391-7668
WWW.GVIFLOW.COM INFO@GVIFLOW.COM